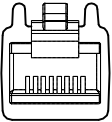


RJ45S END VIEW

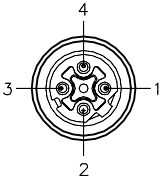


12345678

1 = WHITE/ORANGE (+TX)
2 = ORANGE (-TX)
3 = WHITE/GREEN (+RX)
4 = N/C
5 = N/C
6 = GREEN/WHITE (-RX)
7 = N/C
8 = N/C

Ethernet

FEMALE END VIEW

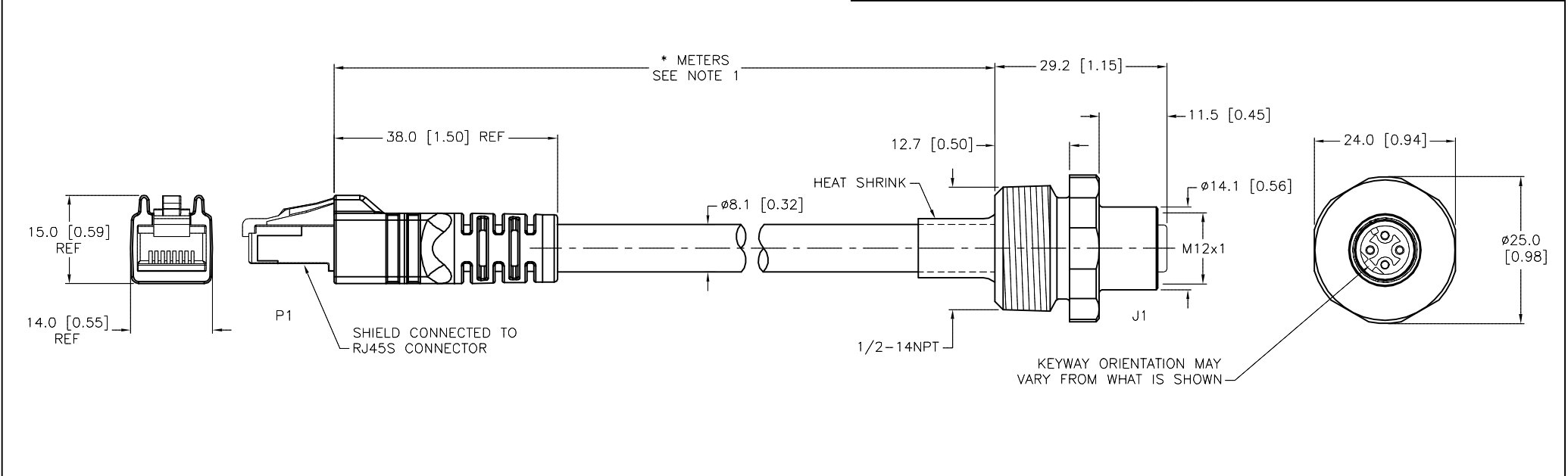


1 = WHITE/ORANGE (+TX)
2 = WHITE/GREEN (+RX)
3 = ORANGE (-TX)
4 = GREEN/WHITE (-RX)

Ethernet

SPECIFICATIONS

CONTACT CARRIER MATERIAL (J1)	NYLON OR TPU
HOUSING MATERIAL/FINISH (J1)	STAINLESS STEEL/PASSIVATED
CONTACT MATERIAL/PLATING (J1)	BRASS/GOLD
CONTACT CARRIER MATERIAL/COLOR (P1)	POLYCARBONATE/CLEAR
MOLDED HEAD MATERIAL/COLOR (P1)	TPU/BLACK
CONTACT MATERIAL/PLATING (P1)	BRONZE/GOLD
RATED CURRENT [A]	1.5 A
RATED VOLTAGE [V]	42 V
OUTER CABLE JACKET MATERIAL/COLOR	TPE/TEAL
CONDUCTOR INSULATION MATERIAL	HDPE
NUMBER OF CONDUCTORS [AWG]	4x22 AWG, STRANDED, CAT 5e
SHIELDING	ALUM.-POLYESTER FOIL & T-C BRAIDED
TEMPERATURE RANGE	-40°C to +80°C (-40°F to +176°F)
PROTECTION CLASS	MEETS NEMA 1,3,4,6P AND IEC IP68 (RJ45:IP20)



CABLE LENGTH	TOLERANCE *
ALL LENGTHS	+ 4% (OR 50mm) OF LENGTH - 0% (OR 0mm) OF LENGTH WHICHEVER IS GREATER
STRIP LENGTH	TOLERANCE *
0-7mm	±0.5mm
8-29mm	±1.0mm
30-49mm	±2.0mm
50-69mm	±3.0mm
70-100mm	±4.0mm
OVER 100mm	±5.0mm
* UNLESS OTHERWISE SPECIFIED	

NOTES:

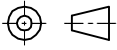
1. "*" INDICATES CABLE LENGTH IN METERS. CONTACT TURCK TO ORDER SPECIFIC LENGTHS.

SOURCE DRAWING - FOR REFERENCE ONLY

RELATED DOCUMENTS

1.
2.
3.
4.

3RD ANGLE PROJECTION



THIS DRAWING IS CONFIDENTIAL AND THE PROPERTY OF TURCK INC. USE OF THIS DOCUMENT WITHOUT WRITTEN PERMISSION IS PROHIBITED.

DRFT RDS
APVD

DATE 04/28/15
SCALE 1=1.0

UNIT OF MEASUREMENT
MILLIMETER [INCH]

DO NOT SCALE THIS DRAWING

DESCRIPTION
RJ45S FKDV 444-*M/14.5/NPT

IDENTIFICATION NO.

REV
B

3000 CAMPUS DRIVE
MINNEAPOLIS, MN 55441
1-800-544-7769
(763) 553-7300
(763) 553-0708 fax
turck.com

B	UPDATED WIRING	TV	07/08/15	50637
REV	DESCRIPTION	BY	DATE	ECO NO.